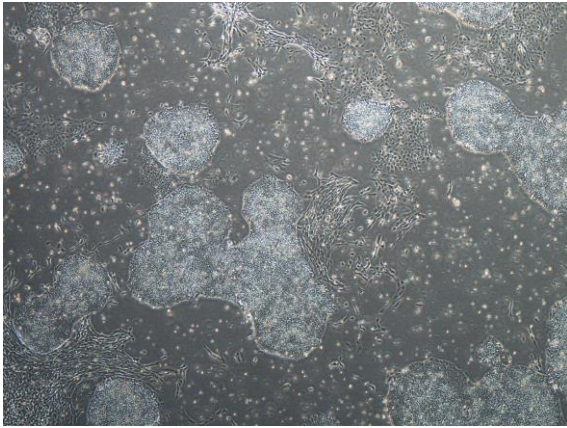
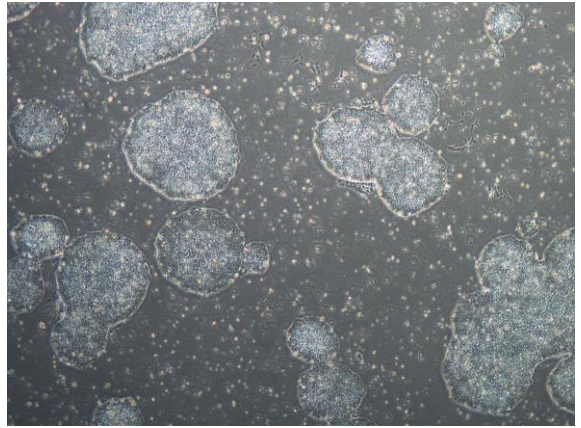


【 CiRA-j-1441 】 Morphology of iPSC colonies

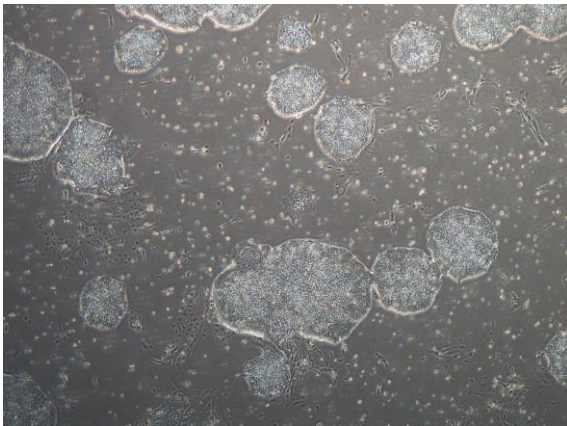
CiRA-j-1441-A: passage-3



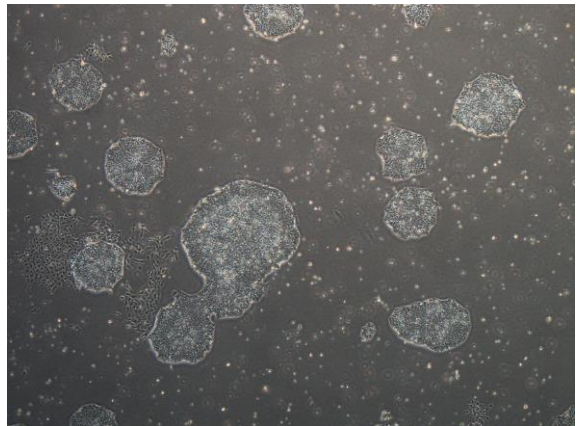
CiRA-j-1441-B: passage-3



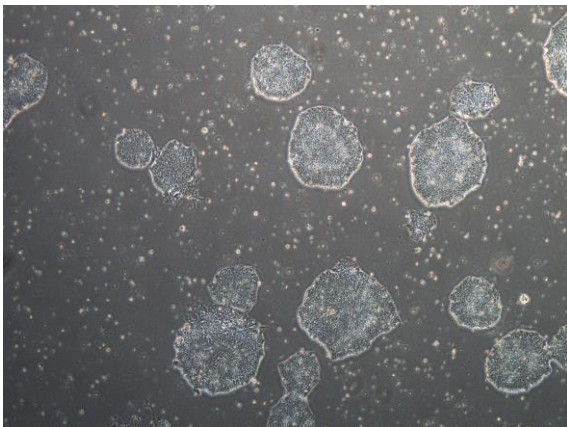
CiRA-j-1441-C: passage-3



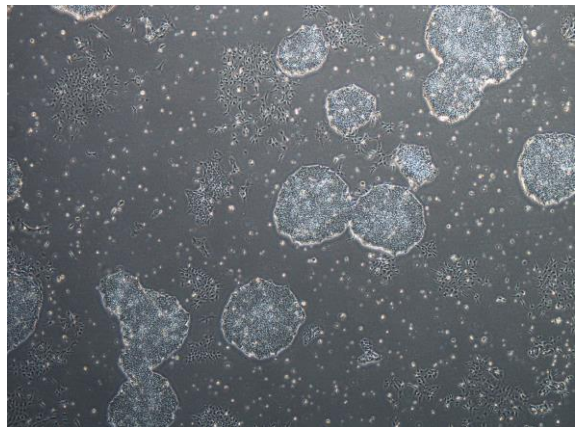
CiRA-j-1441-D: passage-3



CiRA-j-1441-E: passage-3



CiRA-j-1441-F: passage-3



(All images were captured at 4x magnification)